

# RSH

**RSH: Single-inlet, belt-driven centrifugal fans with axis outlet and impeller with backward-facing blades**

Fan:

- Galvanized sheet steel casing
- Impeller with backward-facing blades made from galvanised sheet steel

Motor:

- Motors with IE-2 efficiency, except for motors with lower powers than 0.75 kW, monophase motors or two-speed motors
- Class F motors with ball bearings, IP55 protection
- Max. temperature of air for transport: -20°C. +60°C.

Finish:

- Anticorrosive galvanized sheet steel.

On request:

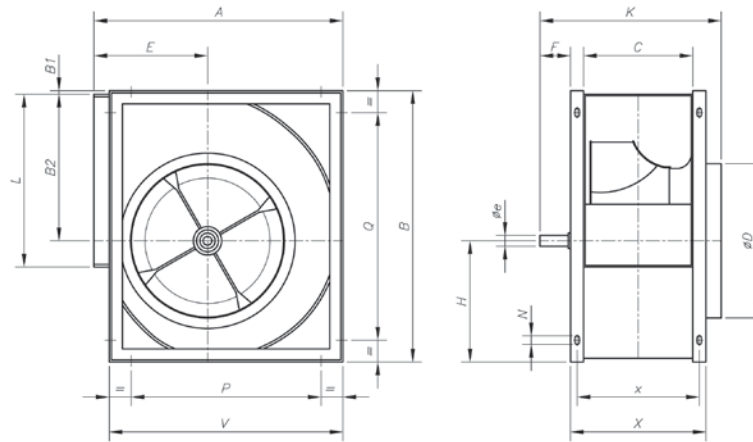
- Different outlet positions
- With two speed motors

## Technical characteristics

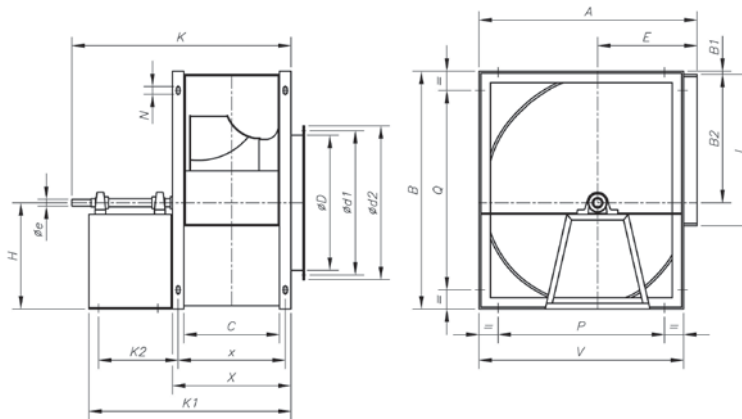
Model	Speed Máx (r/min)	Installed Power Máx. (kW)	Maximum Airflow (m <sup>3</sup> /h)	Air temperature		Approx. weight (kg)
				(°C) min.	máx.	
RSH-315	3200	1,1	5050	-20	85	27
RSH-355	2800	1.5	6650	-20	85	39
RSH-400	2400	1.5	7700	-20	85	44
RSH-450	2200	3	10100	-20	85	55
RSH-500	2200	5,5	14000	-20	85	70
RSH-560	2000	7,5	18300	-20	85	110
RSH-630	1600	7,5	19800	-20	85	125
RSH-710	1400	9,2	25920	-20	85	175
RSH-800	1600	22	40000	-20	85	252
RSH-900	1400	30	51000	-20	85	360
RSH-1000	1400	37	64000	-20	85	445

**Dimensions in mm**

**RSH**



	A	B	B1	B2	C	øD	øe	E	F	H	K	L	N	P	Q	V	X	x
RSH-315	518	578	3	340	223	322	25	236	83	235	395	404	13x18	280	280	480	283	253
RSH-355	578	655	6	383	247	362	30	261	78	266	425	453	13x18	355	355	548	327	287
RSH-400	651	736	4,5	431,5	274	404	30	290	78	300	452	507	13x18	355	355	613	354	314
RSH-450	726	827	5	486	308	448	35	322	92	336	500	569	13x18	530	530	681	388	348
RSH-500	800	918	5	538	344	510	35	352	92	375	535	638	13x18	530	530	750	424	394
RSH-560	893	1030	8	602	383	570	40	390	87	420	600	715	13x18	530	530	845	483	433
RSH-630	999	1157	7	678,5	432	635	45	434	87	471,5	650	801	13x18	530	530	946	532	482
RSH-710	1121	1303	7	765	478	722	50	485	115	531	725	898	17x22	630	630	1058	578	528



	A	B	B1	B2	C	øD	ød1	ød2	øe	E	H	K	K1	K2	L	N	P	Q	V	X	x
RSH-800	1250	1468	7	862	533	808	844	875	45	535	599	1170	1060	440	1007	17x22	710	710	1181	633	583
RSH-900	1408	1648	7	971	595	896	945	980	55	604	670	1313	1191	510	1130	17x22	800	800	1319	715	655
RSH-1000	1541	1810	9	1066	663	996	1044	1080	55	657	735	1381	1259	510	1267	17x22	900	900	1462	783	713

DECORATIVE FANS

WALL MOUNTED FANS

DUCT FANS

DIDW FANS

SISW FANS

ROOF TOP FANS

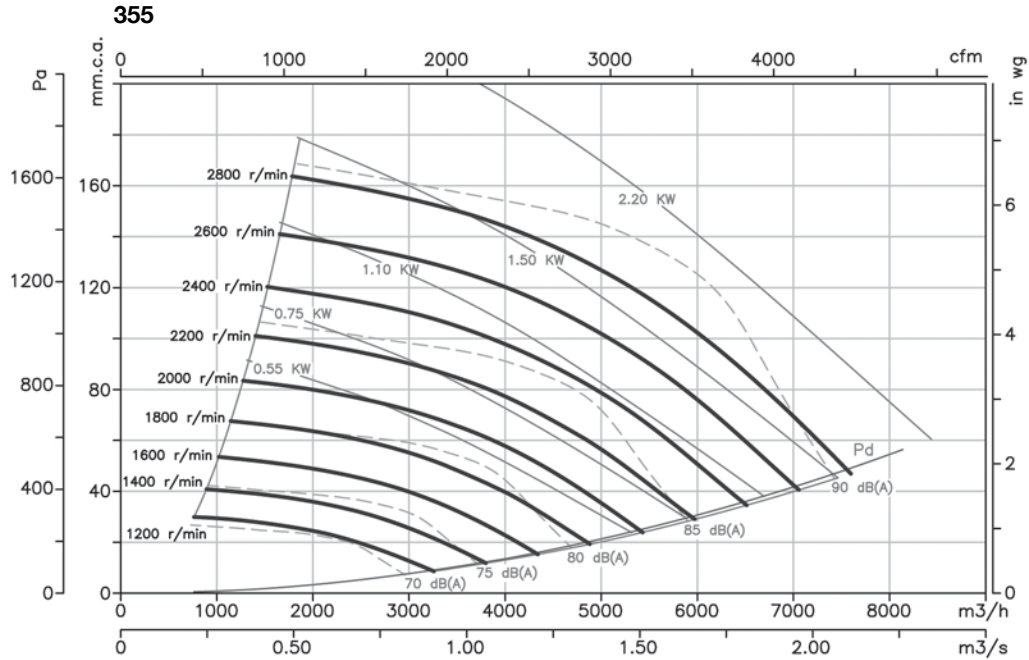
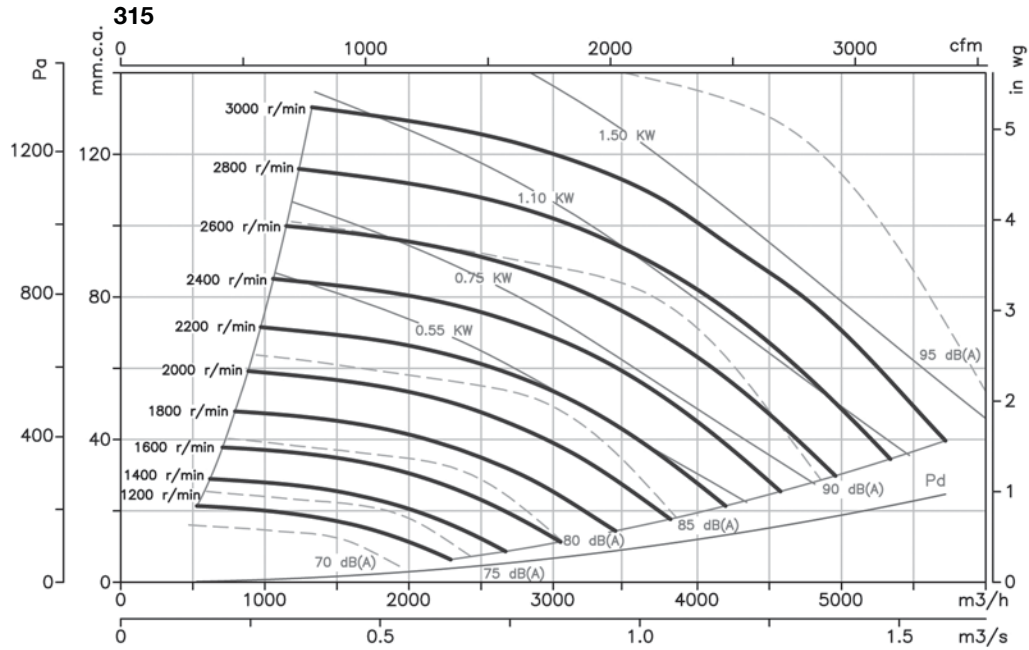
AXIAL IN LINE FANS

SOMKE FANS

ACCESSORIES

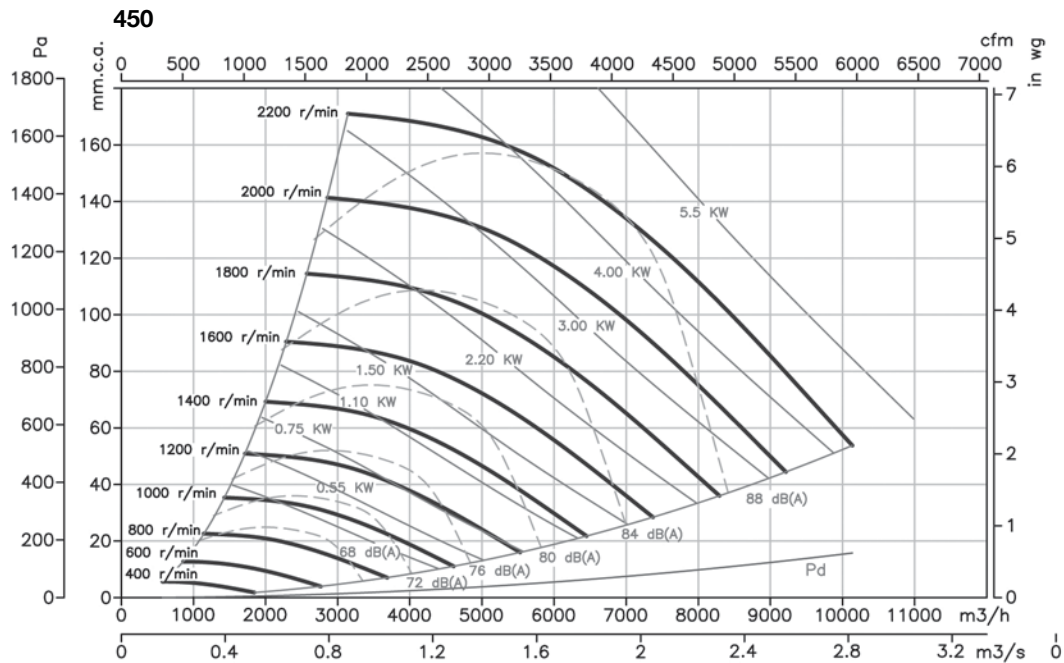
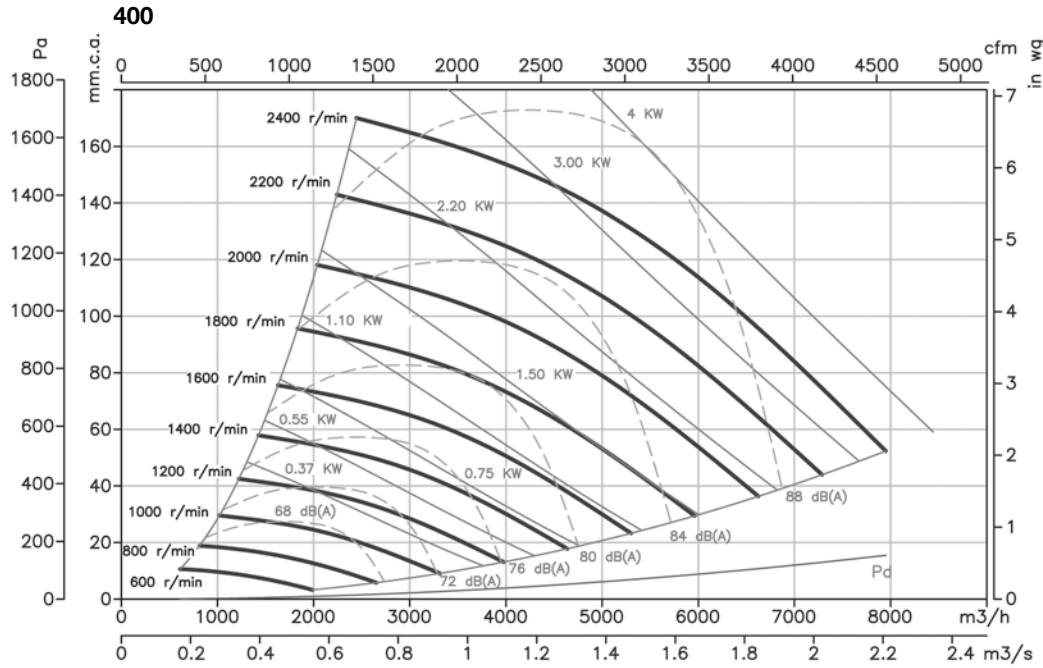
### Characteristic curves

Q = Airflow in m<sup>3</sup>/h, m<sup>3</sup>/s and cfm.  
 Pe = Static pressure in mm.w.c., Pa and in wg.



### Characteristic curves

Q = Airflow in m<sup>3</sup>/h, m<sup>3</sup>/s and cfm.  
 Pe = Static pressure in mm.w.c., Pa and in wg.



DECORATIVE FANS

WALL MOUNTED FANS

DUCT FANS

DIDW FANS

SISW FANS

ROOF TOP FANS

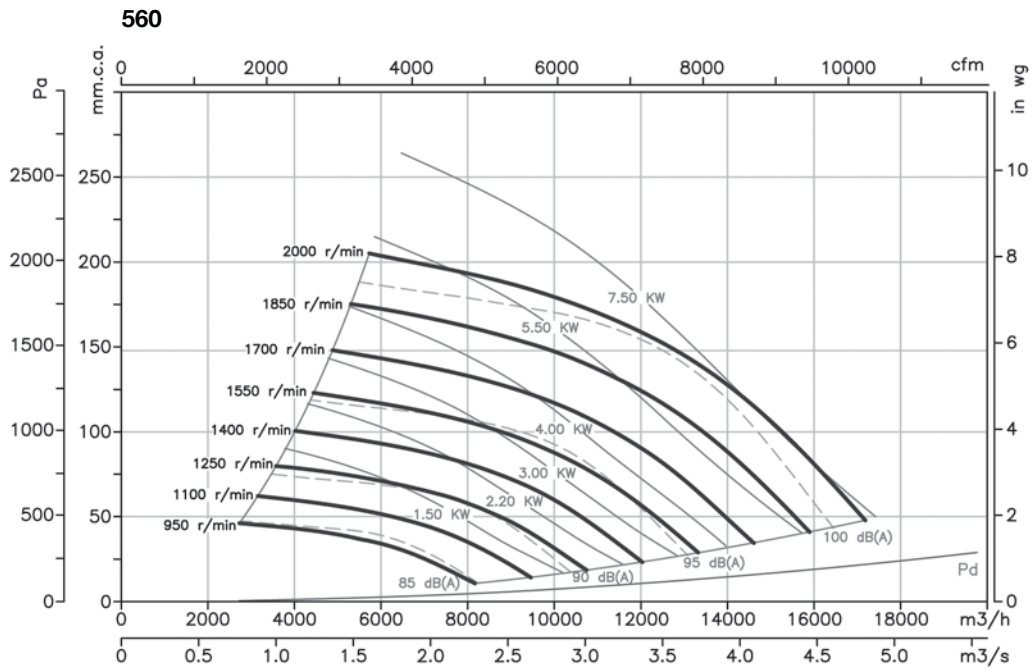
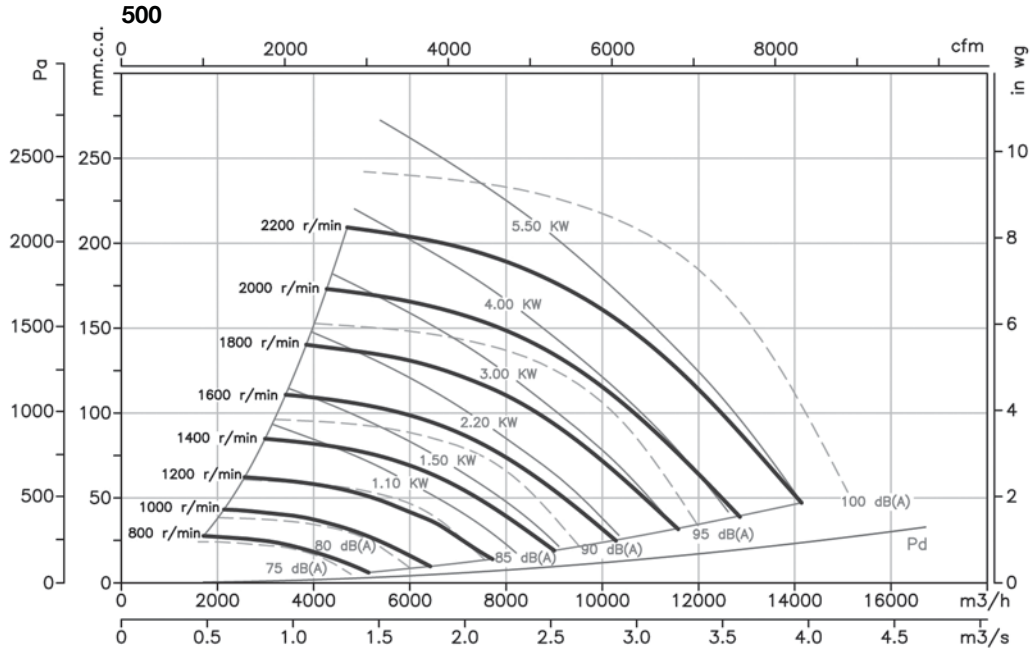
AXIAL IN LINE FANS

SOMKE FANS

ACCESSORIES

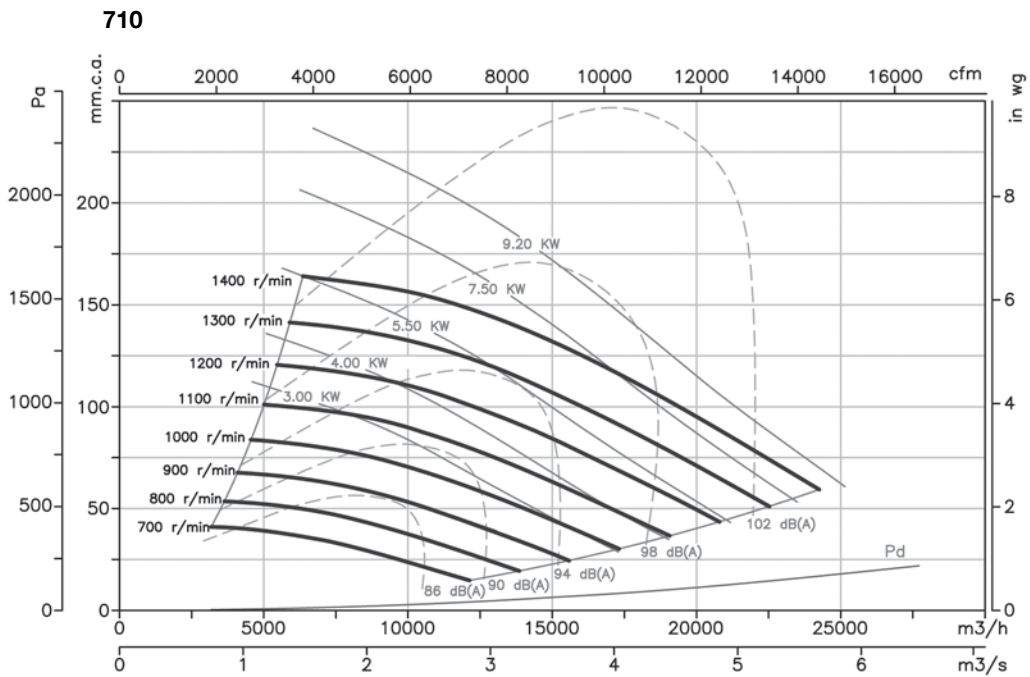
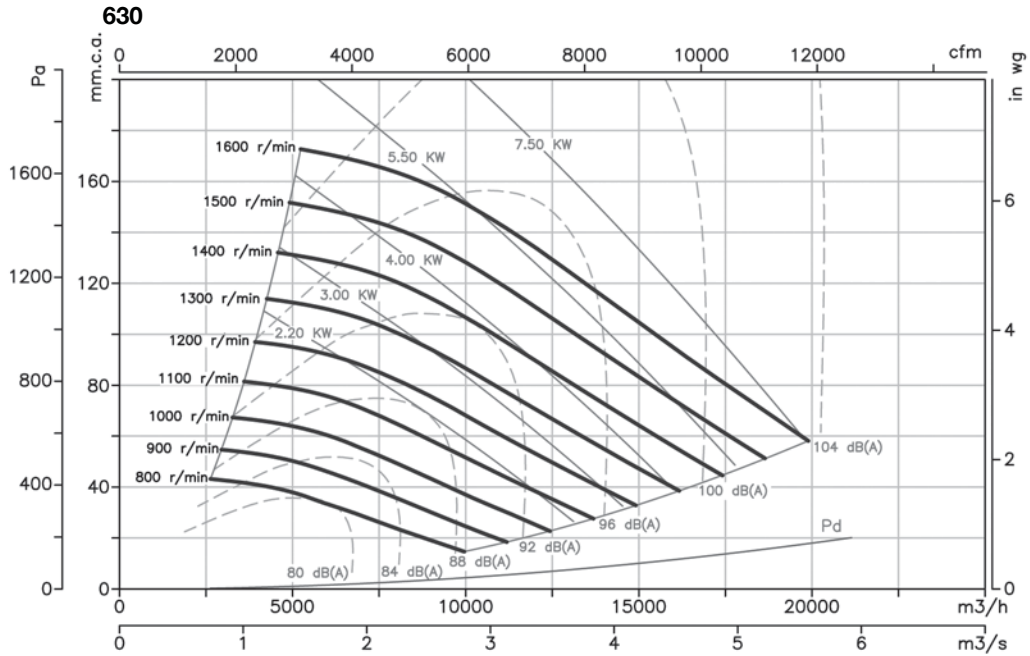
### Characteristic curves

Q = Airflow in m<sup>3</sup>/h, m<sup>3</sup>/s and cfm.  
 Pe = Static pressure in mm.w.c., Pa and in wg.



### Characteristic curves

Q = Airflow in m<sup>3</sup>/h, m<sup>3</sup>/s and cfm.  
 Pe = Static pressure in mm.w.c., Pa and in wg.



DECORATIVE FANS

WALL MOUNTED FANS

DUCT FANS

DIDW FANS

SISW FANS

ROOF TOP FANS

AXIAL IN LINE FANS

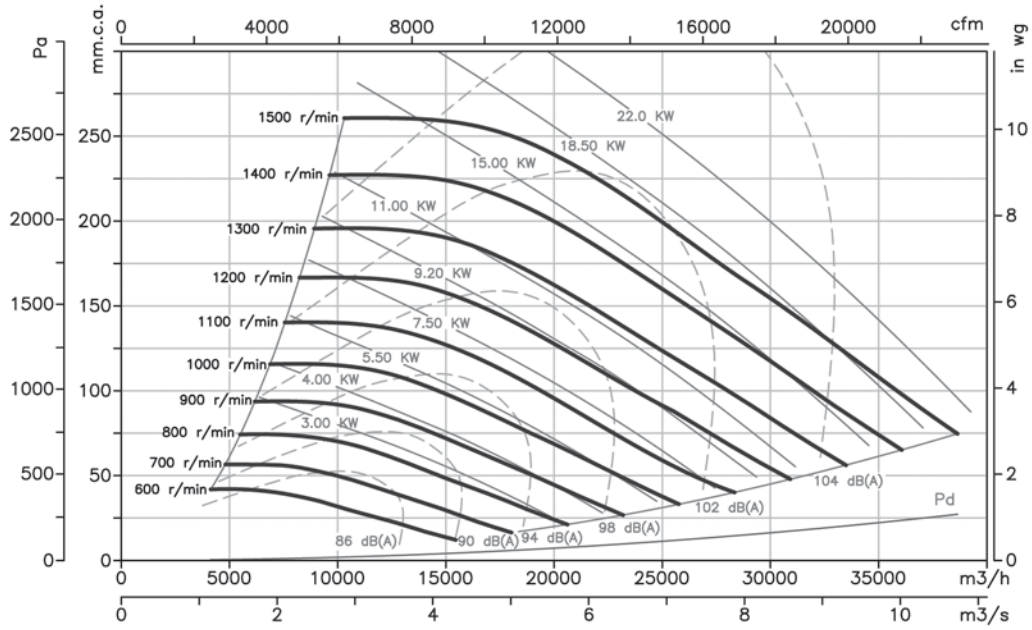
SOMKE FANS

ACCESSORIES

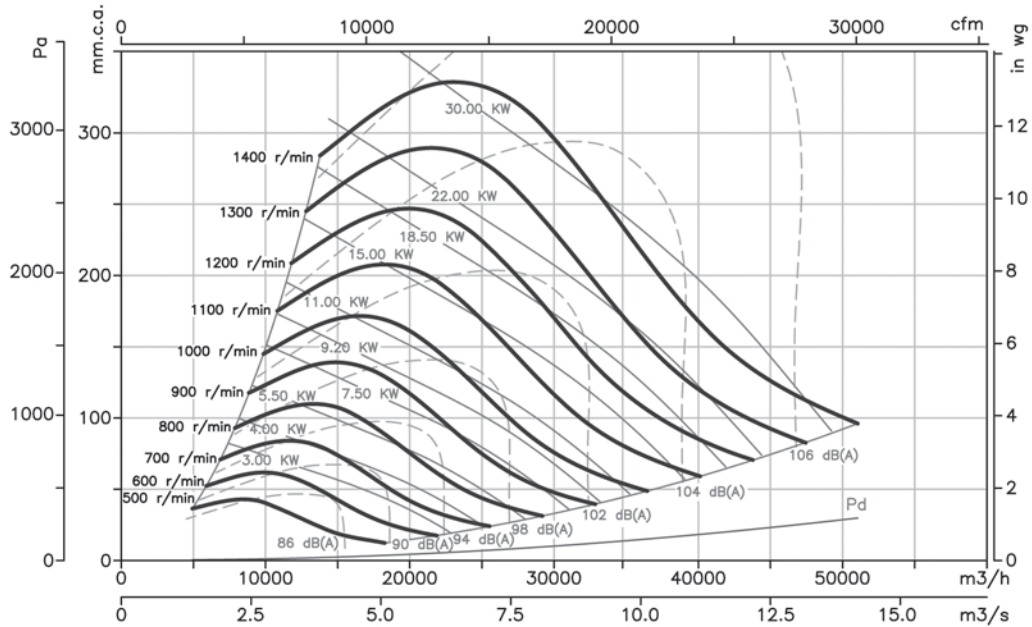
### Characteristic curves

Q = Airflow in m<sup>3</sup>/h, m<sup>3</sup>/s and cfm.  
 Pe = Static pressure in mm.w.c., Pa and in wg.

#### 800

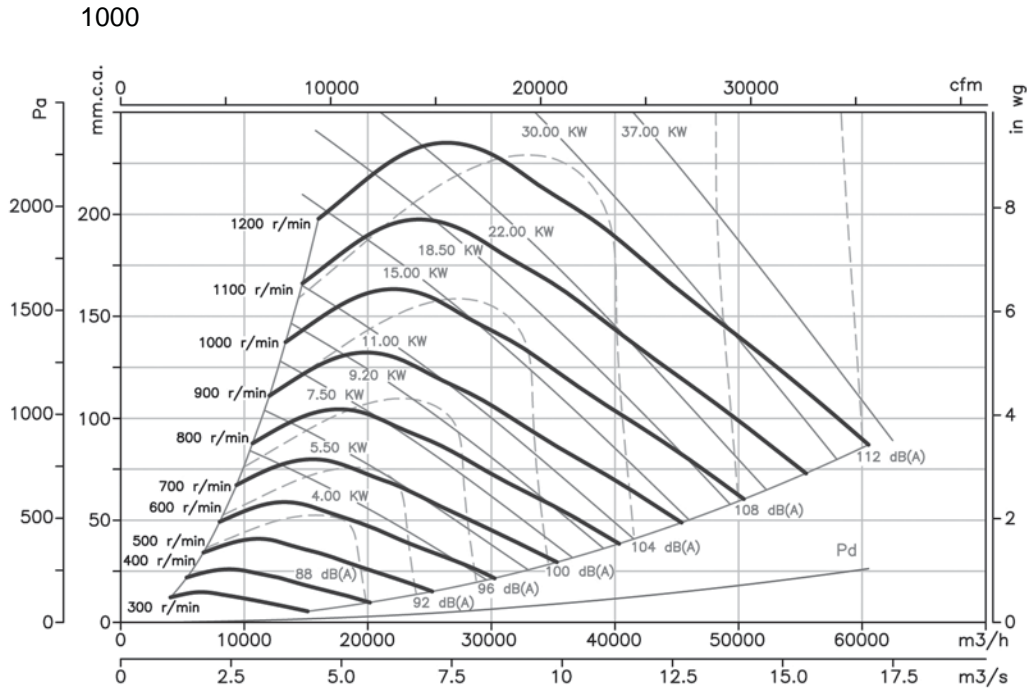


#### 900



**Characteristic curves**

Q = Airflow in m<sup>3</sup>/h, m<sup>3</sup>/s and cfm.  
 Pe = Static pressure in mm.w.c., Pa and in wg.



curves according to sisteven standard

DECORATIVE FANS

WALL MOUNTED FANS

DUCT FANS

DIDW FANS

SISW FANS

ROOF TOP FANS

AXIAL IN LINE FANS

SOMKE FANS

ACCESSORIES